
Working on Software That is Older Than You

— Sally Wahba —
@sallyky

Once upon a time...



So what is NetApp and what did I do there?

NetApp

- Established in 1992
- Data storage
- Data ONTAP

Sally

- At NetApp from 2012 - 2021
- Performance Engineering Group
- Astra

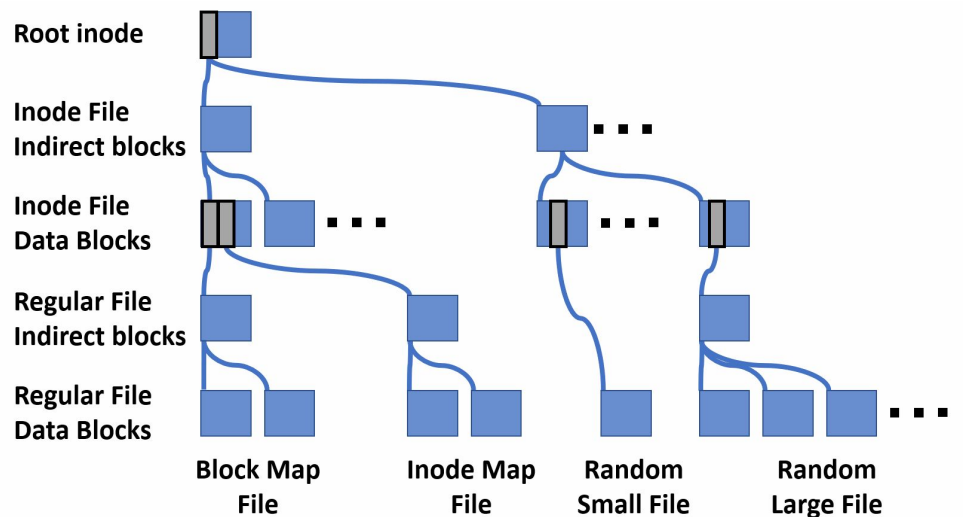


Lesson 1

— Beware... —
Your design is here to stay

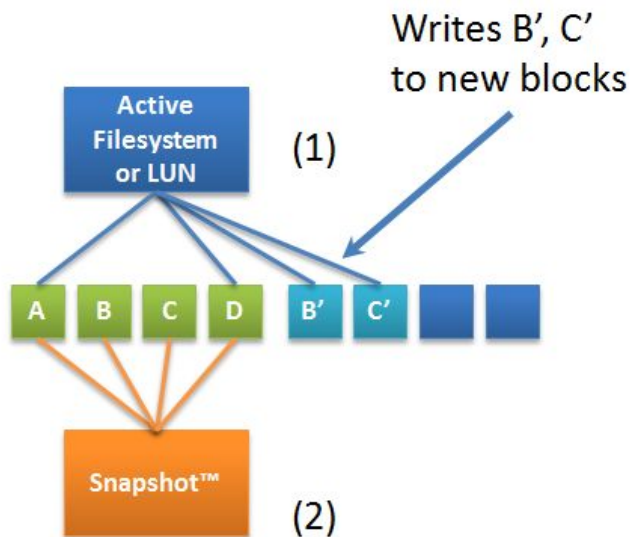
Your design is here to stay – the great

WAFL



Your design is here to stay – the great

Snapshots

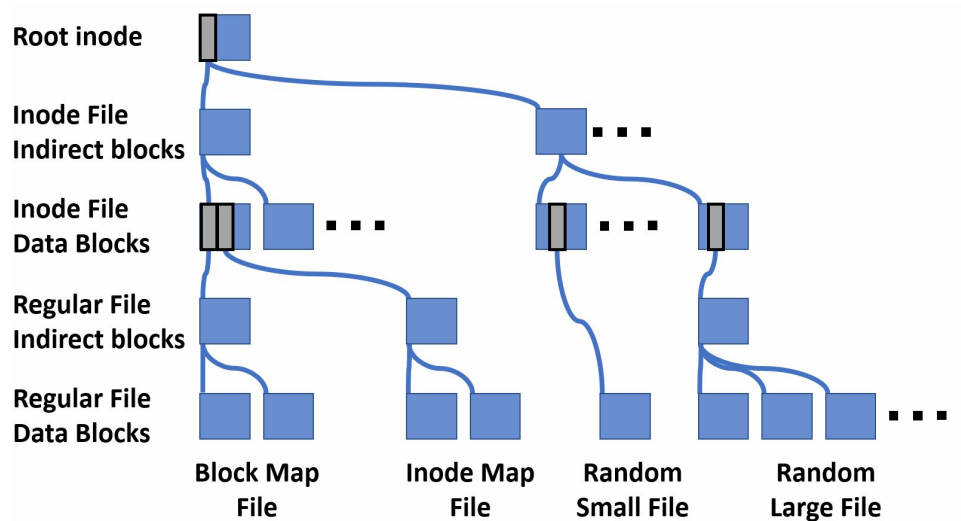


Redirect on Write (RoW)
Apply changes to blocks B and C

- 1) Active Filesystem after new writes = $A + B' + C' + D$
- 2) Snapshot (original) = $A + B + C + D$

Your design is here to stay – the NOT so great

- Shift left
- In-build unit tests
 - WAFL buffer and WAFL volume

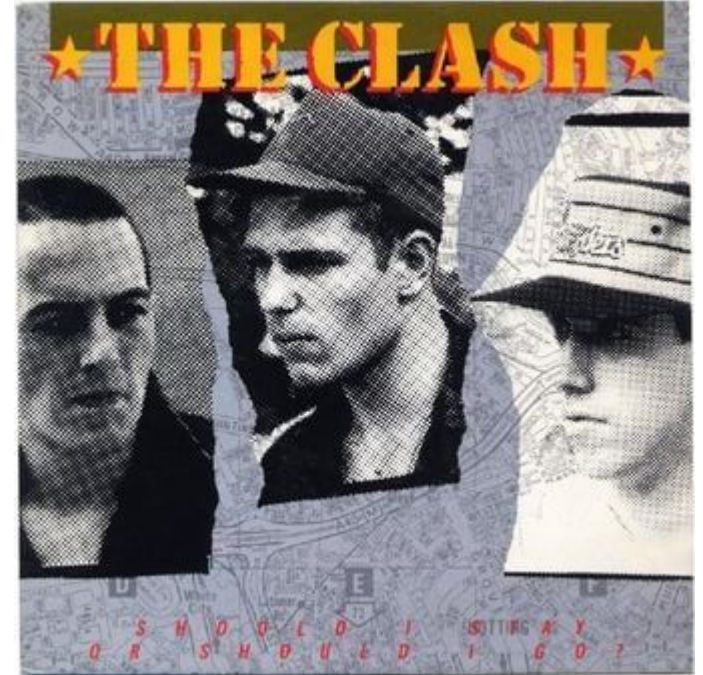


Lesson 2

— Assimilating startups is hard —

Should I build or should I buy?

- Why buy in the first place?
- The buy:
 - Spinnaker - 2003

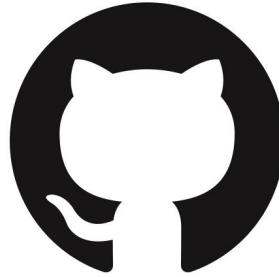


Lesson 3

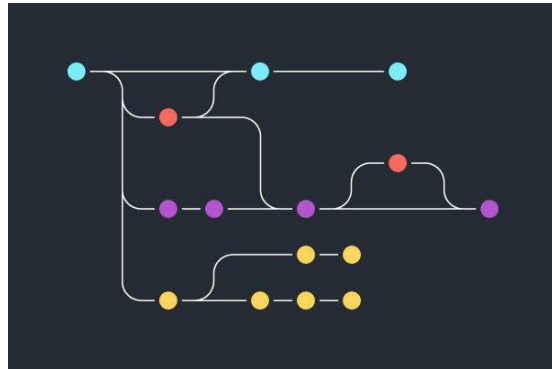
— Modernize where it makes sense —

Shiny objects

- Source code management
- Branching strategy
- Continuous integration



PERFORCE



Let's translate

to Splunk

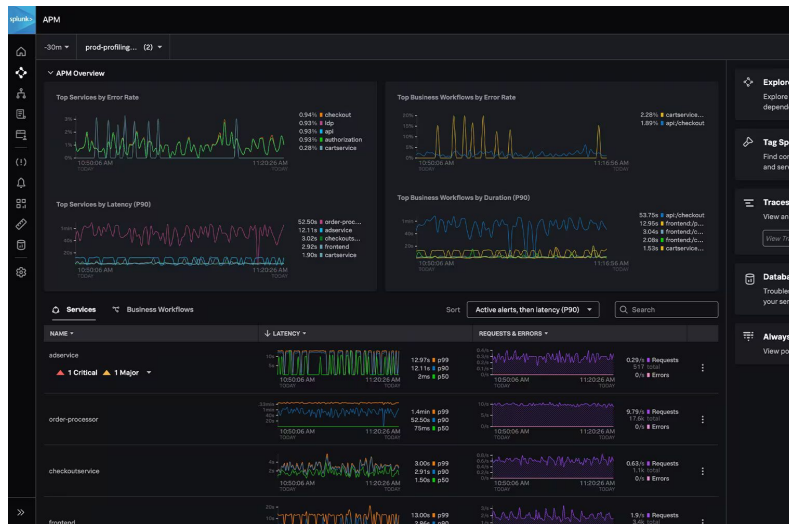
So what is Splunk and what do I do there?

Splunk

- Established in 2003
- Making sense of data

Sally

- At Splunk since 2021
- Observability suite



Lesson 1

— Beware... —
Your design is here to stay

What the HEC?

- HEC format
- Log observer
- HTTP 429 - Too many requests
- HTTP 503 - Service Unavailable

Lesson 2

— Assimilating startups is hard —

5 startups

- The observability startup mix
- Joining the mother ship

Lesson 3

— Modernize where it makes sense —

OTel

- To instrument, generate, collect, and export telemetry data
- SignalFx Smart Agent



Lessons

- Beware, your design is here to stay
- Assimilating startups is hard
- Modernize where it makes sense

Image and Code References

- FAS system: <https://www.netapp.com/data-storage/fas/>
- Waffle: <https://kristineskitchenblog.com/our-best-buttermilk-waffles-recipe/>
- WAFL: https://en.wikipedia.org/wiki/Write_Anywhere_File_Layout
- WAFL Snapshots: https://en.wikipedia.org/wiki/Write_Anywhere_File_Layout
- The Clash: <https://genius.com/The-clash-should-i-stay-or-should-i-go-lyrics>
- Perforce Logo: <https://brandfolder.com/perforce/public-logos#>
- Github Logo: <https://github.com/logos>
- Perl Logo: https://en.wikipedia.org/wiki/Perl#/media/File:Perl_language_logo.svg
- Python Logo: https://www.python.org/static/community_logos/python-logo-master-v3-TM.png
- Code branches: <https://www.perforce.com/blog/vcs/git-branching-model-multiple-releases>
- Splunk APM: https://www.splunk.com/en_us/products/apm-application-performance-monitoring.html
- Otel Logo: <https://cncf-branding.netlify.app/projects/opentelemetry/>

Thank you
