



- How to bring a11y into your teams

By: Laveena Ramchandani

# About me

- **Testing for 8+ years now**
- **Studied Computer science**
- **Blogger**
- **Speaker**
- **Host**
- **Trainer at the Coders Guild**
- **Working at easyJet**



# Table of contents

**01**

**Part 1: Some background**

How I got into a11y

**02**

**Why a11y is important?**

Why should we do this?

**03**

**Benefits**

**04**

**Part 2: How did bring a11y to the team?**

What did I do?

**05**

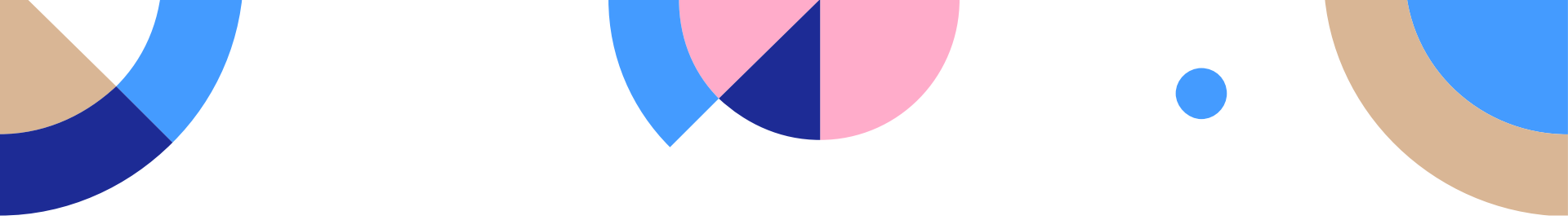
**Coach your teams**

Helping the team understand

**06**

**Part 3: When to do a11y & Tips**

The fun bit!

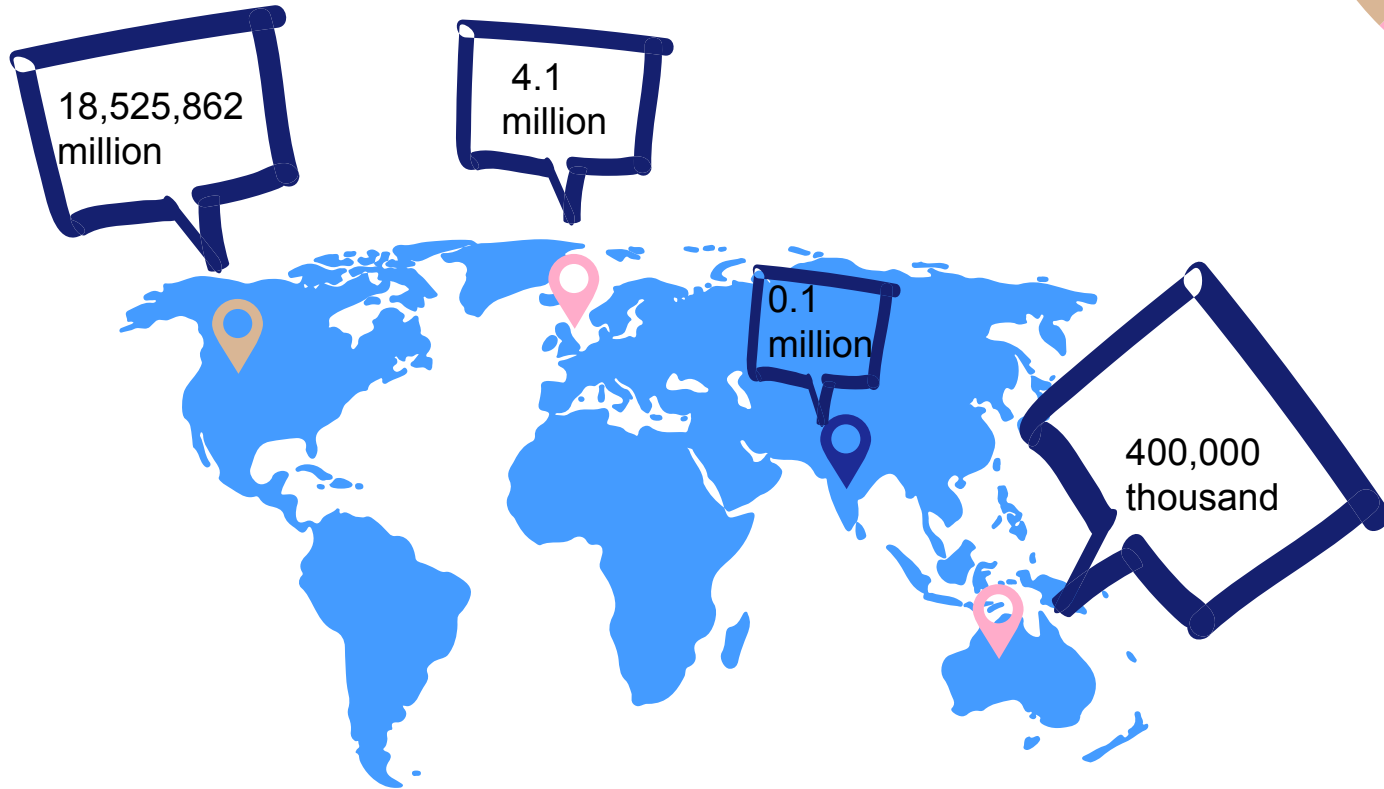


**”The power of the web is in its universality.  
Access by everyone regardless of disability is  
an essential aspect.“- *Tim Berners Lee***

# Part 1: Some background



# Did you know?



# Colour blindness in the UK

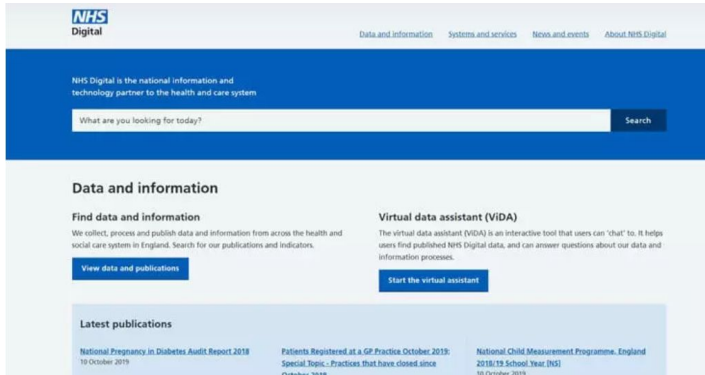
- Affects up to 1 in 12 men and 1 in 200 women worldwide.
- 8.4 million people of working age (16-64) reported that they were disabled in October-December 2020, which is 20% of the working age population.  
... **52.3%** of disabled people were in employment, down from 54.1% a year previously. The employment rate for people who are not disabled was 81.1%, down from 82.2%

# News – Done it wrong!





# News – Done it Right



**NHS Digital**

[Data and information](#) [Systems and services](#) [News and events](#) [About NHS Digital](#)

NHS Digital is the national information and technology partner to the health and care system

What are you looking for today?  [Search](#)

### Data and information

**Find data and information**  
We collect, process and publish data and information from across the health and social care system in England. Search for our publications and indicators.  
[View data and publications](#)

**Virtual data assistant (VIDA)**  
The virtual data assistant (VIDA) is an interactive tool that users can "chat" to. It helps users find published NHS Digital data, and can answer questions about our data and information processes.  
[Start the virtual assistant](#)

### Latest publications

<a href="#">National Pregnancy in Diabetes Audit Report 2018</a> 19 October 2018	<a href="#">Patients Registered at a GP Practice October 2018</a> Special Topics - Practices that have closed since October 2018	<a href="#">National Child Measurement Programme, England 2018/19 School Year (NS)</a> 18 October 2018
---	---	---

**TESCO**

*Every little helps*





Are we making it accessible for them?

For individuals without disability technology makes things easier

For individuals **with** disability technology makes things **possible**

# Introduction

- How did I come across a11y as a tester?
- Why did I think of this topic?
- Are you aware of this?
- Useful resources/advocates



# Why is a11y important?



## Community

Relationship you build with the community



## Brand

Helps enhance your brand



## Smart

Business wise



## Market research

Extend market research



## Innovation

Drive innovation



## Legalities

Minimize legal risk

# Benefits



## Goal 1

Wider audience



## Goal 2

Increases usability



## Goal 3

Satisfies current  
and future legal  
requirements and  
ethics.



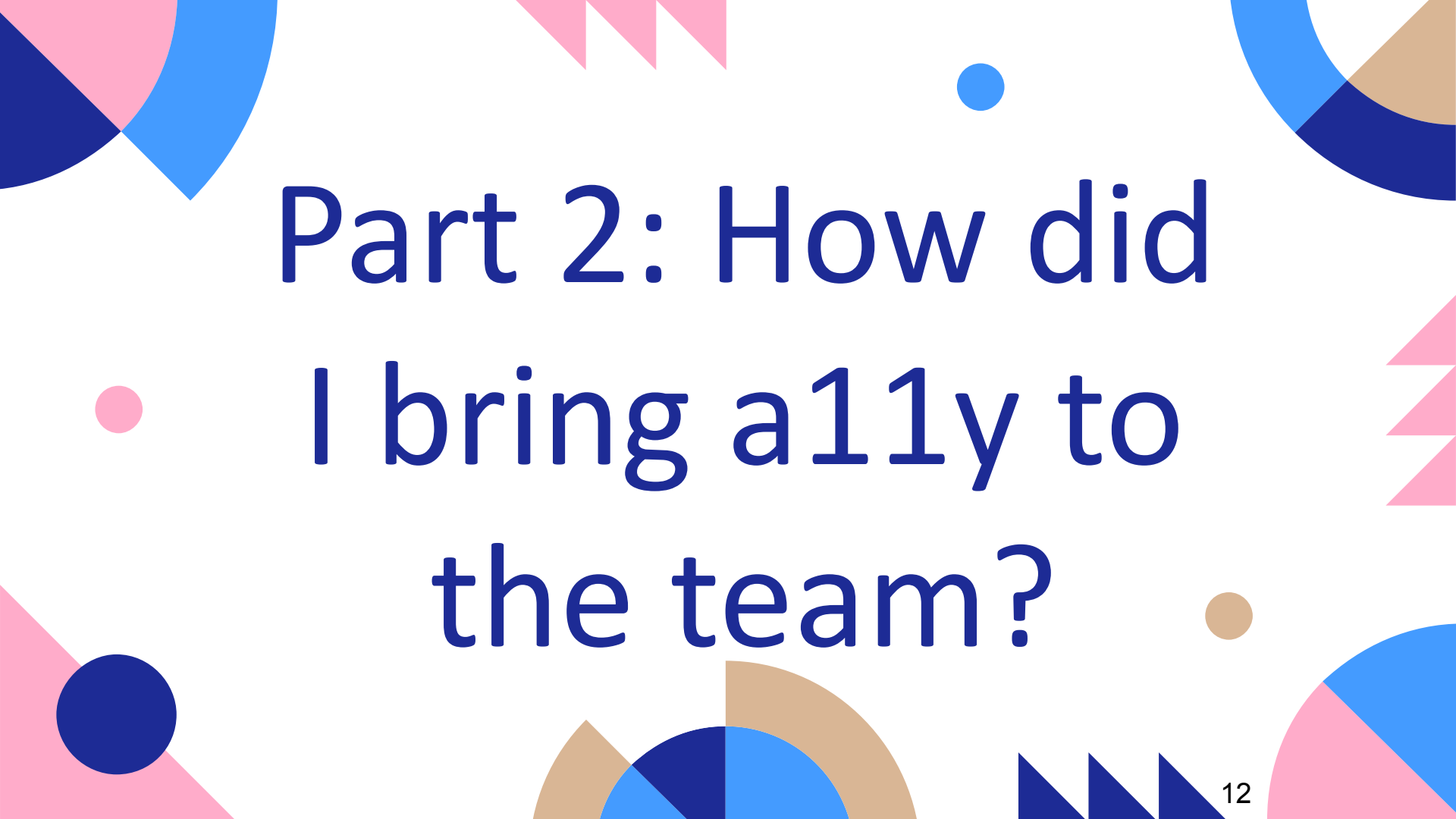
## Goal 4

Improves  
maintainability and  
efficiency.



Video





# Part 2: How did I bring a11y to the team?

# My steps...



## Awareness

Start chatting about a11y



## Slides

Create informative slides



## Communication

Work on myself what I want to convey



## Teams

Speak to individuals & team



## Research

Suggest options



## Report

Create a report of the product



# Team coaching

## What do I do?

I deliver information, I become an SME/advocate for a11y

## How do I convince?

By explaining a11y and making sure I deliver vital details

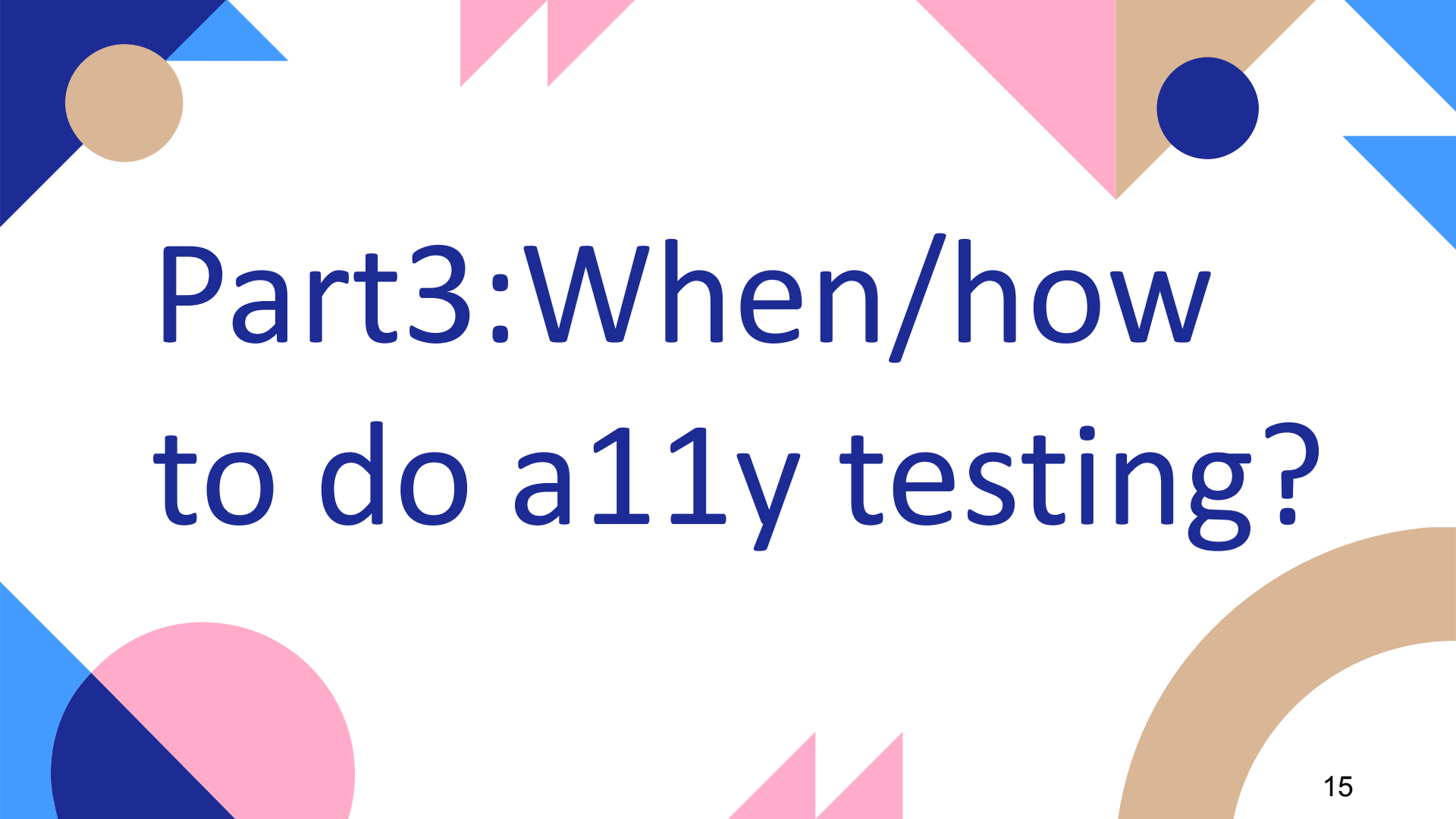


## How to back my point

I can take some outputs of my research/report

## How do I know they understand?

What Information they understand or find as blockers?

The slide features a white background with various geometric shapes in blue, pink, and brown. In the top-left corner, there is a brown circle and a blue triangle. In the top-right corner, there is a blue circle and a pink triangle. In the bottom-left corner, there is a pink circle and a blue triangle. In the bottom-right corner, there is a brown arc and a pink triangle. The main text is centered and reads: 

# Part3:When/how to do a11y testing?

# When?

Design/planning

Good phase to start!

Requirements

I would suggest start as early as requirements phase.

# Good ol Budget

Would you rather risk it?

Free tools available



You also want to reach more people

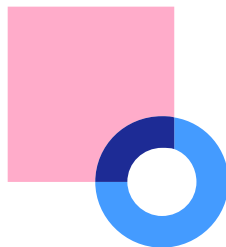
It is important

# What to include in my a11y report?



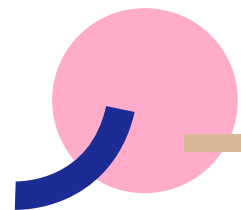
## Areas you tested

Mention the areas you would concentrate when reporting



## Results

Show the results of your checks



## Suggestions

If possible provide with some suggestions

# Results



## Advocate

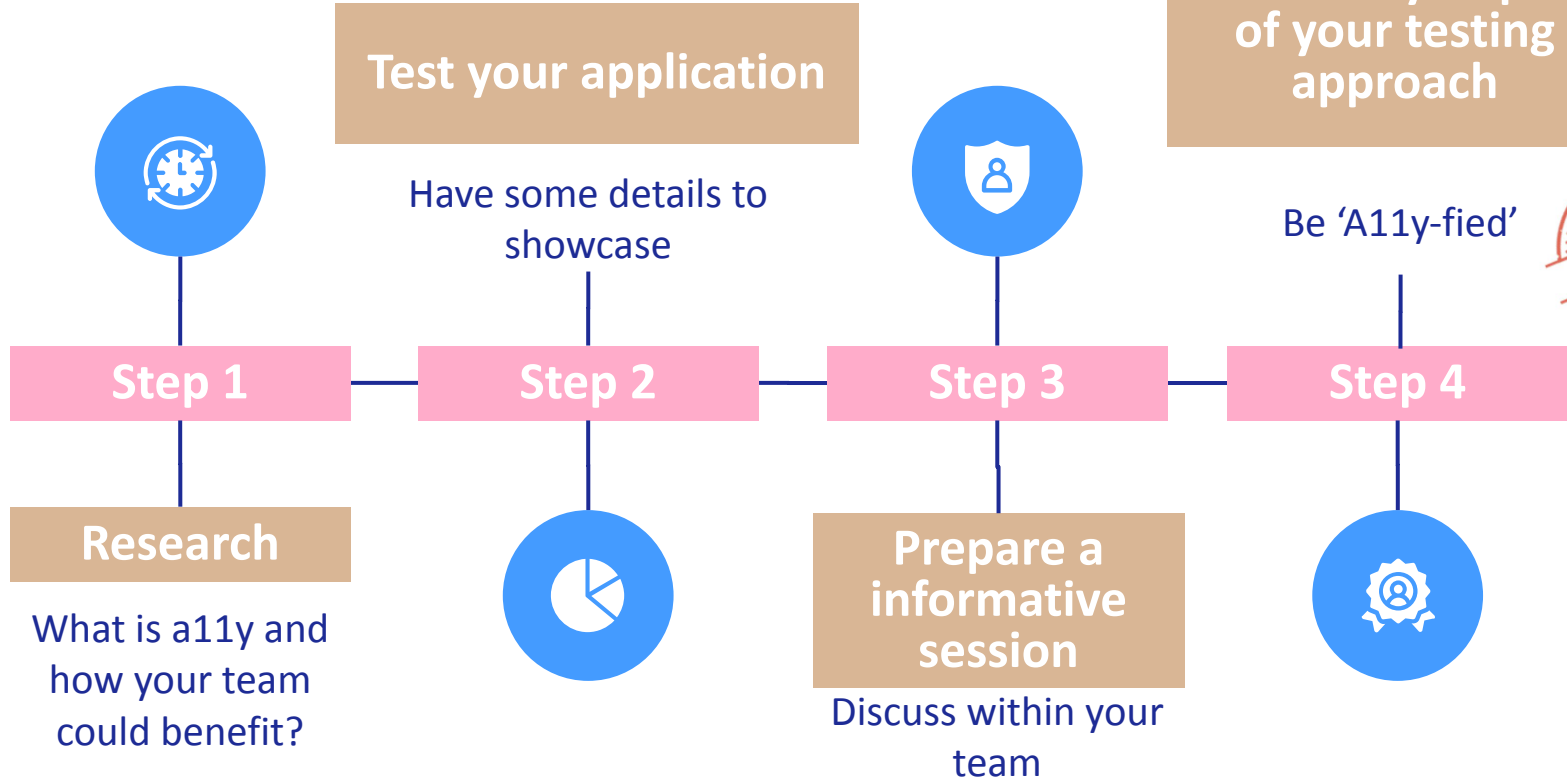
- SME
- Spreading more eminence



## Accomplished

- Team members approach you
- Keep you in loop

# Follow My Steps

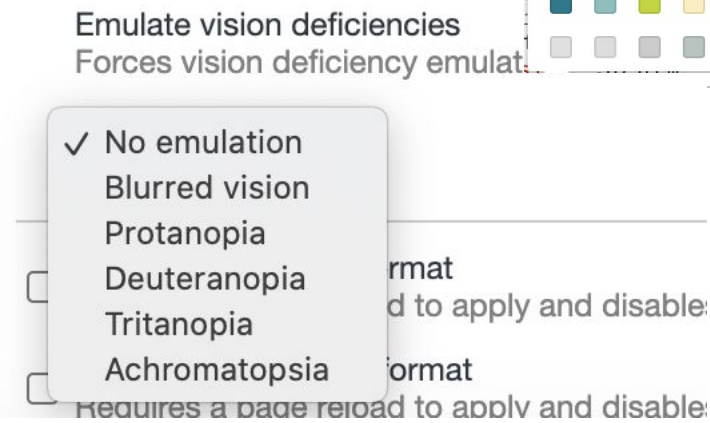
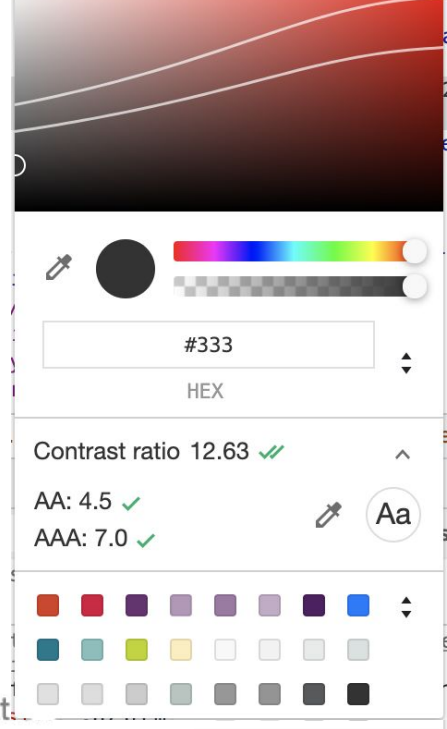
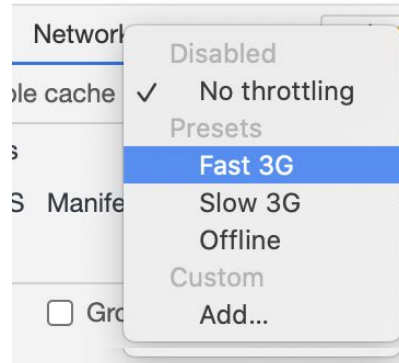




# Quick checks/tips

## Plugins you can download NOW:

- *ARC toolkit*
- *AXE*
- *WAVE*
- *Lighthouse*
- *Remove styling*
- *Screen readers*





# 4 principles of accessible content

*I can perceive it.*

*I can use it.*

*I can grasp it.*

*I can access it.*



**1. Perceivable**



**2. Operable**



**3. Understandable**



**4. Robust**





# Summary

- Understand a11y
- How to introduce this to your respective teams
- What can you do ?
- Some useful tips/tools



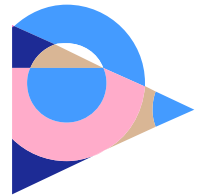
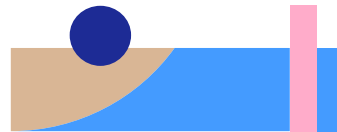
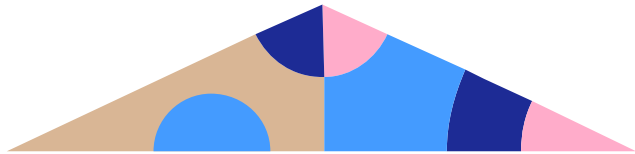
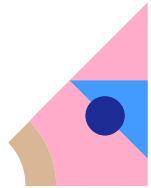
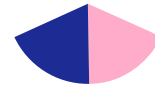
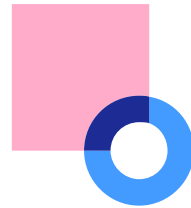
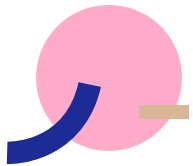
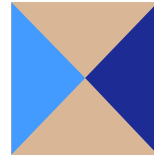
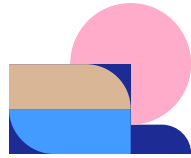
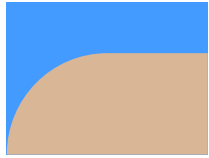
The slide features a white background with several decorative geometric elements. In the top-left corner, there is a pink triangle, a dark blue circle, and a small pink circle. On the left side, a large semi-circle is divided into blue, dark blue, and brown sections. In the top-right, there is a brown circle and a blue arc. On the right side, a large circle is divided into blue, dark blue, and pink sections. In the bottom-right, there is a blue circle and a semi-circle divided into dark blue, blue, and brown sections. At the bottom center, there are three pink triangles pointing upwards. The word "Thanks!" is centered in a dark blue font.

Thanks!

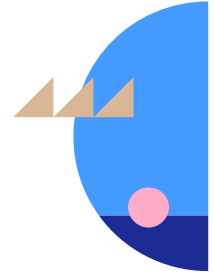
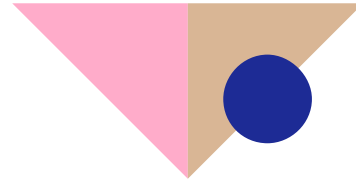
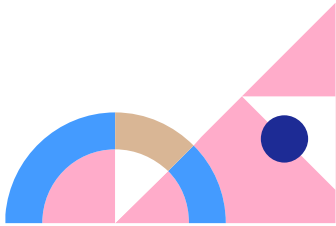
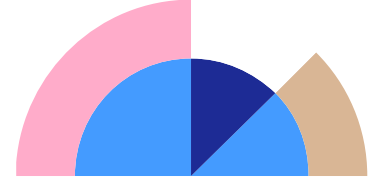
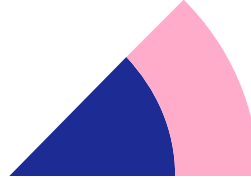
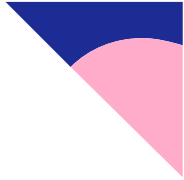
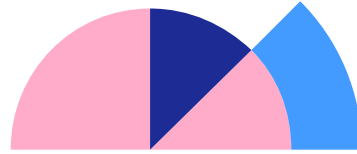
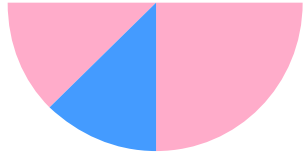
**Thank you very much**



# Alternative resources



# Resources



# Fonts & colors used

This presentation has been made using the following fonts:

## **Poppins**

(<https://fonts.google.com/specimen/Poppins>)

## **Darker Grotesque**

(<https://fonts.google.com/specimen/Darker+Grotesque>)

#449bff

#ffacca

#d9b695

#1d2b95

#ffffff



# Storyset

Create your Story with our illustrated concepts. Choose the style you like the most, edit its colors, pick the background and layers you want to show and bring them to life with the animator panel! It will boost your presentation. Check out [How it Works](#).



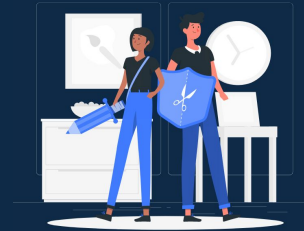
Pana



Amico



Bro



Rafiki



Cuate

# Use our editable graphic resources...

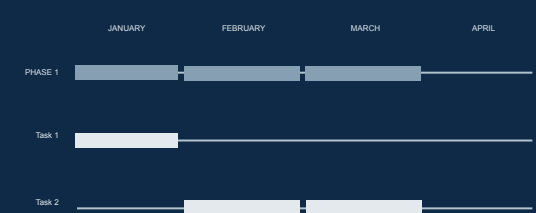
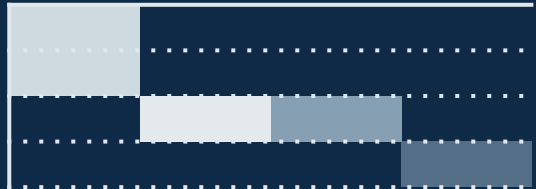
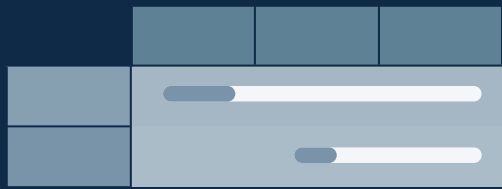
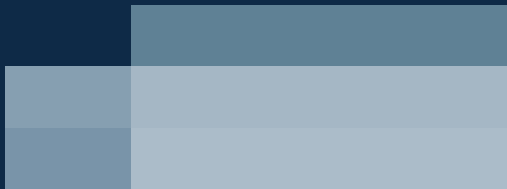
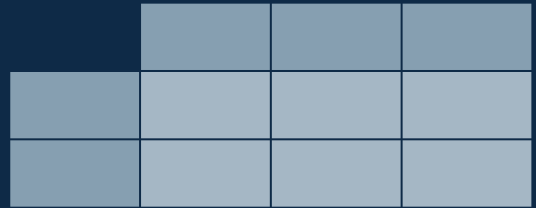
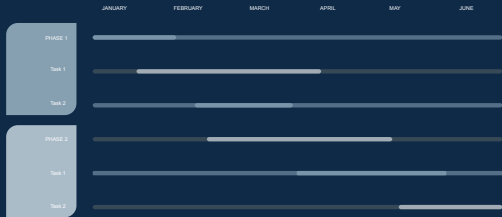
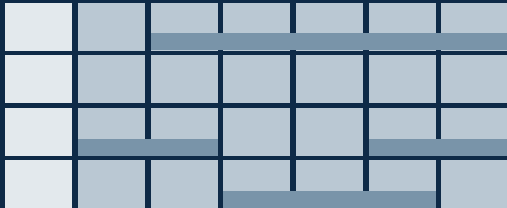
You can easily [resize](#) these resources without losing quality. To [change the color](#), just ungroup the resource and click on the object you want to change. Then, click on the paint bucket and select the color you want.

Group the resource again when you're done. You can also look for more [infographics](#) on [Slidesgo](#).

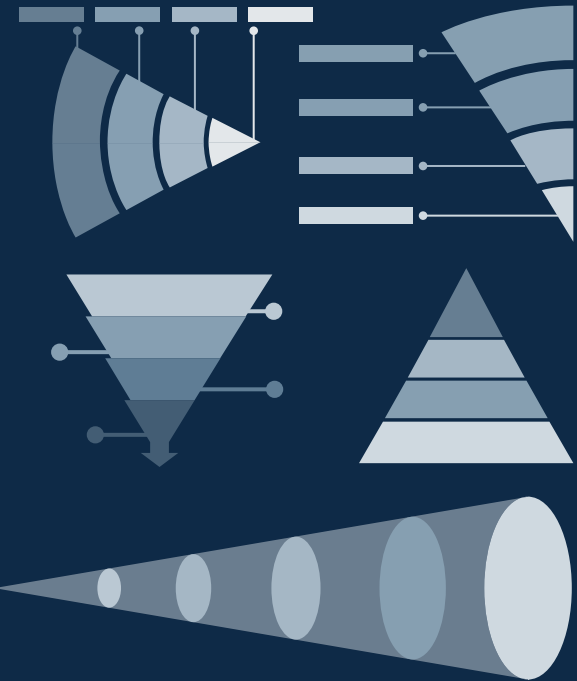
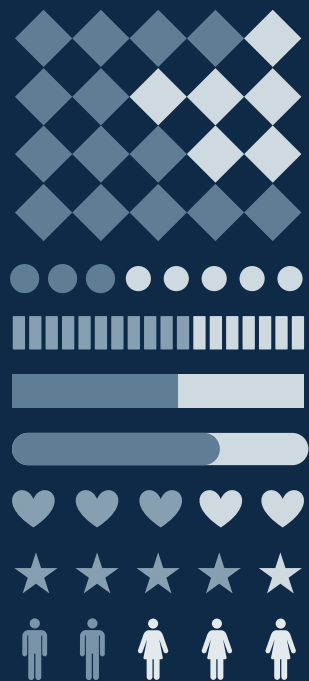
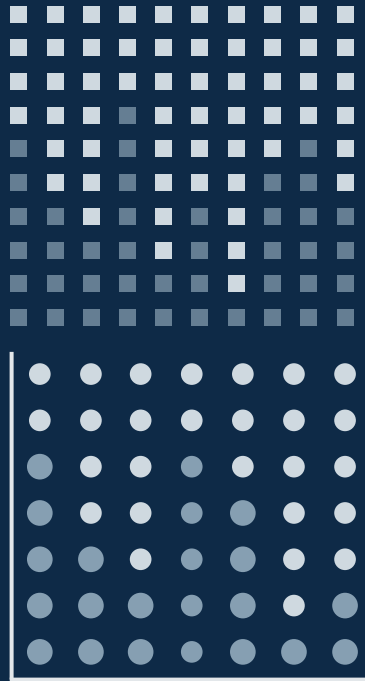












# ...and our sets of editable icons

You can resize these icons without losing quality.

You can change the stroke and fill color; just select the icon and click on the paint bucket/pen.

In Google Slides, you can also use Flaticon's extension, allowing you to customize and add even more icons.





## Educational Icons



## Medical Icons



## Business Icons



## Teamwork Icons





## Creative Process Icons



## Performing Arts Icons



# Nature Icons



# SEO & Marketing Icons



